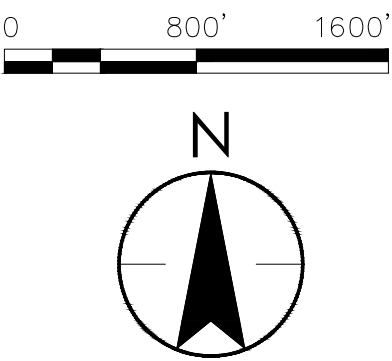


LEGEND - LANDSCAPE PLAN	
DESCRIPTION	
STANDARD PLANTING	
DOUBLE PLANTING	
NO ADDITIONAL PLANTING	
LEGEND - GENERAL	
DESCRIPTION	
FENCE	
PHOTOVOLTAIC PANEL	
INVERTER	
DNO	

**PRELIMINARY  
NOT FOR  
CONSTRUCTION**  
02/10/2025



REV.	DESCRIPTION	DRAWN	CHKD	APPRVD	DATE
C	ISSUED FOR REVIEW	RB	SL	AC	02/10/2025
B	ISSUED FOR REVIEW	RB	SL	AC	12/20/2024
A	ISSUED FOR REVIEW	RB	SL	AC	11/26/2024
DRAWING REVISIONS					



**Stantec**  
Stantec Consulting Services Inc.  
50 Derby Street Suite 260 Hingham, MA U.S.A. 02043  
3052 Beaumont Centre Circle Lexington, Kentucky U.S.A. 40513-1703  
www.stantec.com

COA #  
SEAL

FILE NAME: 2057322000 Lost City Solar.dwg

Copyright Reserved  
The Contractor shall verify and be responsible for all dimensions. DO NOT scale the drawing - any errors or omissions shall be reported to Stantec without delay.  
The Copyrights to all designs and drawings are the property of Stantec. Reproduction or use for any purpose other than that authorized by Stantec is forbidden.

DRAWN: RB  
DESIGNED: RB  
PROJECT NO: 2057322000

CHECKED: SL  
CHECKED: SL  
SCALE: 1"=800'

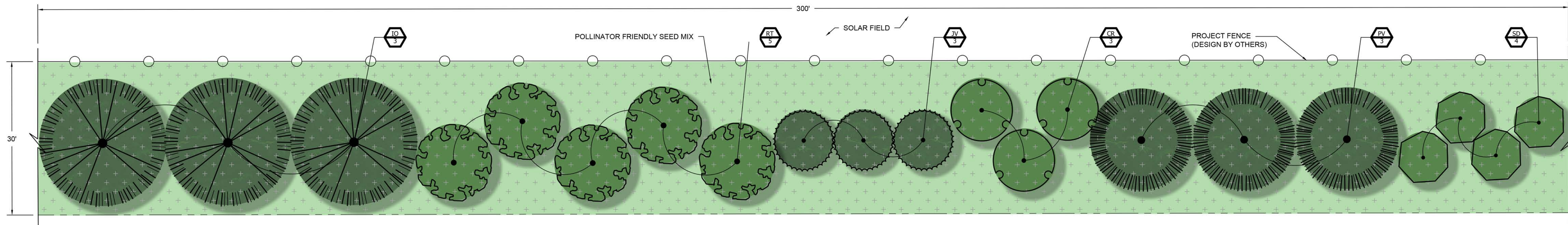
IND. REVIEW MF  
APPROVED: AC

CLIENT/PROJECT:		LOST CITY RENEWABLES LLC LOST CITY MUHLENBURG COUNTY, DUNMOR KENTUCKY
TITLE:		LOST CITY OVERALL LANDSCAPE PLAN
SHT 1 OF 4	DWG NO: 2057322000-LC-C-700	REV: C

VA (128 resources) \A\Projects (Essex Locality) \2057322000 Lost City Solar\CAD\2057322000 Lost City Solar.dwg  
2025/02/10 3:27 PM By: Burard, Rachel



PLAN OF TYPICAL 300' SEGMENT OF STANDARD PLANTING



SECTION VIEW OF TYPICAL 300' SEGMENT OF STANDARD PLANTING



LEGEND

SYMBOL	CODE	BOTANICAL / COMMON NAME	SYMBOL	CODE	BOTANICAL / COMMON NAME	SYMBOL	CODE	BOTANICAL / COMMON NAME
EVERGREEN TREES								
	IO	ILEX OPACA AMERICAN HOLLY		AS	ALNUS SERRULATA SMOOTH ALDER		RC	RHUS COPALLINUM WINGED SUMAC
	JV	JUNIPERUS VIRGINIANA EASTERN RED CEDAR		AF	AMORPHA FRUTICOSA INDIGO BUSH		RG	RHUS GLABRA SMOOTH SUMAC
	PV	PINUS VIRGINIANA VIRGINIA PINE		AA	ARONIA ARBUTIFOLIA RED CHOKEBERRY		RT	RHUS TYPHINA STAGHORN SUMAC
				CR	CORNUS RACEMOSA GRAY DOGWOOD		SD	SALIX DISCOLOR PUSSY WILLOW
				ID	ILEX DECIDUA DECIDUOUS HOLLY		VD	VIBURNUM DENTATUM SOUTHERN ARROWWOOD
				LB	LINDERA BENZOIN SPICEBUSH		VN	VIBURNUM NUDUM POSSUMHAW VIBURNUM
				PO	PHYSOCARPUS OPULIFOLIUS COMMON NINEBARK			

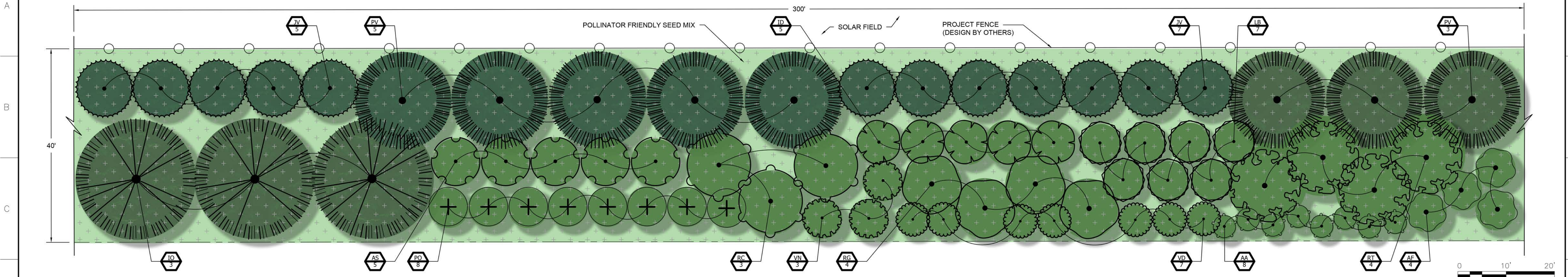
PRELIMINARY  
NOT FOR  
CONSTRUCTION  
02/10/2025

VA:1836resources\LAN\Projects (Essex Locality)\2057322000 LOST CITY SOLAR\CAD\2057322000 Lost City Solar.dwg  
2025/02/10 3:24 PM By: Baird, Ritchie

<div><div></div><div>Stantec</div><div>Stantec Consulting Services Inc. 50 Derby Street Suite 260 Hingham, MA U.S.A. 02043 3052 Beaumont Centre Circle Lexington, Kentucky U.S.A. 40513-1703 www.stantec.com</div></div>						COA # SEAL	Copyright Reserved <small>The Contractor shall verify and be responsible for all dimensions. DO NOT scale the drawing - any errors or omissions shall be reported to Stantec without delay. The Copyrights to all designs and drawings are the property of Stantec. Reproduction or use for any purpose other than that authorized by Stantec is forbidden.</small>	CLIENT/PROJECT: LOST CITY RENEWABLES LLC LOST CITY MUHLENBURG COUNTY, DUNMOR KENTUCKY																														
<table><tr><td>C</td><td>ISSUED FOR REVIEW</td><td>RB</td><td>SL</td><td>AC</td><td>02/10/2025</td></tr><tr><td>B</td><td>ISSUED FOR REVIEW</td><td>RB</td><td>SL</td><td>AC</td><td>12/20/2024</td></tr><tr><td>A</td><td>ISSUED FOR REVIEW</td><td>RB</td><td>SL</td><td>AC</td><td>11/26/2024</td></tr></table>						C	ISSUED FOR REVIEW	RB	SL	AC	02/10/2025	B	ISSUED FOR REVIEW	RB	SL	AC	12/20/2024	A	ISSUED FOR REVIEW	RB	SL	AC	11/26/2024	<table><tr><td>DRAWN:</td><td>RB</td><td>CHECKED:</td><td>SL</td><td>IND. REVIEW</td><td>MF</td></tr><tr><td>DESIGNED:</td><td>RB</td><td>CHECKED:</td><td>SL</td><td>APPROVED:</td><td>AC</td></tr></table>		DRAWN:	RB	CHECKED:	SL	IND. REVIEW	MF	DESIGNED:	RB	CHECKED:	SL	APPROVED:	AC	TITLE: LOST CITY LANDSCAPE PLAN
C	ISSUED FOR REVIEW	RB	SL	AC	02/10/2025																																	
B	ISSUED FOR REVIEW	RB	SL	AC	12/20/2024																																	
A	ISSUED FOR REVIEW	RB	SL	AC	11/26/2024																																	
DRAWN:	RB	CHECKED:	SL	IND. REVIEW	MF																																	
DESIGNED:	RB	CHECKED:	SL	APPROVED:	AC																																	
DRAWING REVISIONS						PROJECT NO: 2057322000	SCALE: 1"=10'	SHT 2 OF 4	DWG NO: 2057322000-LC-C-700	REV: C																												



PLAN OF TYPICAL 300' SEGMENT OF DOUBLE PLANTING



SECTION VIEW OF TYPICAL 300' SEGMENT OF DOUBLE PLANTING



NOTE: SECTION VIEW REPRESENTS PLANTS 8-10 YEARS AFTER PLANTING.

LEGEND

SYMBOL	CODE	BOTANICAL / COMMON NAME	SYMBOL	CODE	BOTANICAL / COMMON NAME	SYMBOL	CODE	BOTANICAL / COMMON NAME
<b>EVERGREEN TREES</b>								
	IO	ILEX OPACA AMERICAN HOLLY		AS	ALNUS SERRULATA SMOOTH ALDER		RC	RHUS COPALLINUM WINGED SUMAC
	JV	JUNIPERUS VIRGINIANA EASTERN RED CEDAR		AF	AMORPHA FRUTICOSA INDIGO BUSH		RG	RHUS GLABRA SMOOTH SUMAC
	PV	PINUS VIRGINIANA VIRGINIA PINE		AA	ARONIA ARBUTIFOLIA RED CHOKEBERRY		RT	RHUS TYPHINA STAGHORN SUMAC
				CR	CORNUS RACEMOSA GRAY DOGWOOD		SD	SALIX DISCOLOR PUSSY WILLOW
				ID	ILEX DECIDUA DECIDUOUS HOLLY		VD	VIBURNUM DENTATUM SOUTHERN ARROWWOOD
				LB	LINDERA BENZOIN SPICEBUSH		VN	VIBURNUM NUDUM POSSUMHAW VIBURNUM
				PO	PHYSOCARPUS OPULIFOLIUS COMMON NINEBARK			

**PRELIMINARY  
NOT FOR  
CONSTRUCTION**  
02/10/2025

REV.	DESCRIPTION	DRAWN	CHKD	APPRVD	DATE
C	ISSUED FOR REVIEW	RB	SL	AC	02/10/2025
B	ISSUED FOR REVIEW	RB	SL	AC	12/20/2024
A	ISSUED FOR REVIEW	RB	SL	AC	11/26/2024

DRAWING REVISIONS

**Stantec**

Stantec Consulting Services Inc.

50 Derby Street Suite 260 Hingham, MA U.S.A. 02043

3052 Beaumont Centre Circle Lexington, Kentucky U.S.A. 40513-1703

www.stantec.com

FILE NAME: 2057322000 Lost City Solar.dwg

COA #	
SEAL	

Copyright Reserved

The Contractor shall verify and be responsible for all dimensions. DO NOT scale the drawing - any errors or omissions shall be reported to Stantec without delay.

The Copyrights to all designs and drawings are the property of Stantec. Reproduction or use for any purpose other than that authorized by Stantec is forbidden.

DRAWN: RB	CHECKED: SL	IND. REVIEW: MF
DESIGNED: RB	CHECKED: SL	APPROVED: AC

PROJECT NO: 2057322000

SCALE: 1"=10'

CLIENT/PROJECT:	LOST CITY RENEWABLES LLC LOST CITY MUHLENBURG COUNTY, DUNMOR KENTUCKY
TITLE:	LOST CITY LANDSCAPE PLAN
SHT 3 OF 4	DWG NO: 2057322000-LC-C-700
REV: C	

VA:1936resources\LAN\Projects (Issued Locally)\2057322000 LOST CITY SOLAR\CAD\2057322000 Lost City Solar.dwg  
2025/02/10 3:18 PM By: Baird, Roche



PLANT SCHEDULE												
QTY	SYMBOL	BOTANICAL NAME	COMMON NAME	USDA PLANTING ZONE	APPROXIMATE MATURE HEIGHT	APPROXIMATE MATURE SPREAD	AVERAGE ANNUAL GROWTH	SPECIFICATION	NOTES			
TREES												
300	IO	ILEX OPACA	AMERICAN HOLLY	5 TO 9	15' TO 35'	20' TO 35'	6"	MIN. 4'-5' HEIGHT - CONTAINER / B&B	SPACE PLANTS AS SHOWN IN TYPICAL LAYOUT			
1,014	JV	JUNIPERUS VIRGINIANA	EASTERN RED CEDAR	2 TO 9	40' TO 50'	12' TO 15'	12" TO 18"	MIN. 4'-5' HEIGHT - CONTAINER / B&B				
697	PV	PINUS VIRGINIANA	VIRGINIA PINE	4 TO 8	40' TO 80'	10' TO 30'	8" TO 12"	MIN. 4'-5' HEIGHT - CONTAINER / B&B				
2,010	TOTAL TREES											
SHRUBS												
397	AS	ALNUS SERRULATA	SMOOTH ALDER	4 TO 9	10' TO 15'	10' TO 15'	12"	MIN. 3' HEIGHT - CONTAINER / B&B	SPACE PLANTS AS SHOWN IN TYPICAL LAYOUT			
318	AF	AMORPHA FRUTICOSA	INDIGO BUSH	4 TO 9	4' TO 15'	6' TO 15'	12"	MIN. 3' HEIGHT - CONTAINER / B&B				
635	AA	ARONIA ARBUTIFOLIA	RED CHOKEBERRY	4 TO 9	6' TO 10'	3' TO 6'	12"	MIN. 3' HEIGHT - CONTAINER / B&B				
61	CR	CORNUS RACEMOSA	GRAY DOGWOOD	3 TO 8	10' TO 15'	10' TO 15'	8" TO 12"	MIN. 3' HEIGHT - CONTAINER / B&B				
397	ID	ILEX DECIDUA	DECIDUOUS HOLLY	5 TO 9	10' TO 15'	5' TO 12'	12" TO 18"	MIN. 3' HEIGHT - CONTAINER / B&B				
556	LB	LINDERA BENZOIN	SPICEBUSH	4 TO 9	6' TO 12'	6' TO 12'	12" TO 18"	MIN. 3' HEIGHT - CONTAINER / B&B				
635	PO	PHYSCARPUS OPULIFOLIUS	COMMON NINEBARK	2 TO 8	5' TO 8'	6' TO 10'	18" TO 24"	MIN. 3' HEIGHT - CONTAINER / B&B				
238	RC	RHUS COPALLINUM	WINGED SUMAC	4 TO 9	7' TO 15'	10' TO 20'	12"	MIN. 3' HEIGHT - CONTAINER / B&B				
318	RG	RHUS GLABRA	SMOOTH SUMAC	3 TO 9	9' TO 15'	9' TO 15'	12" TO 18"	MIN. 3' HEIGHT - CONTAINER / B&B				
420	RT	RHUS TYPHINA	STAGHORN SUMAC	3 TO 8	15' TO 25'	20' TO 30'	12" TO 18"	MIN. 3' HEIGHT - CONTAINER / B&B				
82	SD	SALIX DISCOLOR	PUSSY WILLOW	4 TO 8	10' TO 20'	8' TO 12'	12" TO 24"	MIN. 3' HEIGHT - CONTAINER / B&B				
556	VD	VIBURNUM DENTATUM	SOUTHERN ARROWWOOD	3 TO 8	3' TO 9'	6' TO 8'	12" TO 24"	MIN. 3' HEIGHT - CONTAINER / B&B				
238	VN	VIBURNUM NUDUM	POSSUMHAW VIBURNUM	5 TO 9	5' TO 12'	5' TO 12'	12"	MIN. 3' HEIGHT - CONTAINER / B&B				
4,850	TOTAL SHRUBS											
NOTES: 1. MATURE HEIGHT, MATURE SPREAD, AND AVERAGE ANNUAL GROWTH IS APPROXIMATE. ACTUAL MATURE HEIGHT, MATURE SPREAD, AND ANNUAL GROWTH MAY VARY. 2. PROJECT IS LOCATED IN USDA PLANTING ZONE 7A (MUHLENBERG COUNTY, KENTUCKY). 3. PLANTING SPECIES ARE REPRESENTATIVE OF DESIGN INTENT. ACTUAL SPECIES MAY VARY BASED ON AVAILABILITY OF LOCAL NURSERY STOCK. CONTRACTOR MAY SUBMIT ALTERNATE SPECIES REQUEST FOR APPROVAL BY LANDSCAPE ARCHITECT.												

QUANTITIES BY SEGMENT											
TOTAL QTY	SYMBOL	SEGMENT:									
		1	2	3	4	5	6	7	8	9	10
LINEAR FT		6,174	1,105	1,633	1,332	1,474	2,121	1,708	1,510	9,940	2,965
2,010 TREES											
300	IO	62	11	16	13	15	21	17	15	99	30
1014	JV	247	44	65	53	15	85	17	60	398	30
697	PV	165	29	44	36	15	57	17	40	265	30
4,850 SHRUBS											
397	AS	103	18	27	22	0	35	0	25	166	0
318	AF	82	15	22	18	0	28	0	20	133	0
635	AA	165	29	44	36	0	57	0	40	265	0
61	CR	0	0	0	0	15	0	17	0	0	30
397	ID	103	18	27	22	0	35	0	25	166	0
556	LB	144	26	38	31	0	49	0	35	232	0
635	PO	165	29	44	36	0	57	0	40	265	0
238	RC	62	11	16	13	0	21	0	15	99	0
318	RG	82	15	22	18	0	28	0	20	133	0
420	RT	82	15	22	18	25	28	28	20	133	49
82	SD	0	0	0	0	20	0	23	0	0	40
556	VD	144	26	38	31	0	49	0	35	232	0
238	VN	62	11	16	13	0	21	0	15	99	0
TOTAL TREES & SHRUBS PER SEGMENT:		1,667	298	441	360	103	573	120	408	2,684	208

VEGETATIVE SCREENING NOTES:  
SHRUB AND TREE INSTALLATION

- THE CONTRACTOR SHALL BE RESPONSIBLE FOR LAYOUT OF ALL WORK COVERED UNDER THESE PLANS.
- ALL PLANT MATERIAL, UNLESS OTHERWISE SPECIFIED, SHALL BE UNIFORMLY BRANCHED AND HAVE A VIGOROUS ROOT SYSTEM. PLANT MATERIAL SHALL BE HEALTHY, VIGOROUS, AND FREE FROM DEFECTS, DECAY, DISEASES, INSECT PEST EGGS, AND ALL FORMS OF INFESTATION. ALL PLANT MATERIAL SHALL BE FRESH, FREE FROM TRANSPLANT SHOCK OR VISIBLE WILT. PLANTS DEEMED UNHEALTHY SHALL BE REJECTED.
- ALL PLANT MATERIAL SHALL MEET THE MINIMUM SPECIFICATIONS AND STANDARDS DESCRIBED IN THE CURRENT ISSUE OF "THE AMERICAN STANDARD FOR NURSERY STOCK," PUBLISHED BY THE AMERICAN ASSOCIATION OF NURSERYMEN, 1250 I STREET, N.W., SUITE 500, WASHINGTON, D.C. 20005.
- ALL CONTAINER STOCK SHALL HAVE BEEN PROPAGATED IN A CONTAINER LONG ENOUGH FOR THE ROOT SYSTEM TO HAVE DEVELOPED SUFFICIENTLY TO HOLD ITS SOIL. CONTAINER STOCK WITH POORLY DEVELOPED ROOT SYSTEMS SHALL NOT BE ACCEPTED.
- PLANTS SHALL BE PREPARED FOR SHIPMENT IN A MANNER THAT SHALL NOT CAUSE DAMAGE TO THE BARK, BUDS, BRANCHES, STEMS, OR OVERALL SHAPE OF THE STOCK. CONTAINER GROWN PLANTS SHALL BE TRANSPORTED IN THE CONTAINERS IN WHICH THEY HAVE BEEN GROWN.
- PLANTS NOT INSTALLED ON THE DAY OF ARRIVAL AT THE SITE SHALL BE STORED AND PROTECTED BY THE CONTRACTOR. OUTSIDE STORAGE AREAS SHALL BE SHADED AND PROTECTED FROM THE WIND AND SUN. PLANTS STORED ON SITE SHALL BE PROTECTED FROM ANY DRYING AT ALL TIMES BY COVERING THE BALLS OR ROOTS WITH MOIST SAWDUST, WET BURLAP, WOOD CHIPS, SHREDDED BARK, PEAT MOSS, OR OTHER SIMILAR MULCHING MATERIAL, OR OTHER METHODS APPROVED BY OWNER.
- PLANT SUBSTITUTIONS MAY BE MADE BASED ON AVAILABILITY BUT MUST BE OF SIMILAR SIZE AND LANDSCAPE (SCREENING) VALUE. ALL SUBSTITUTIONS MUST BE APPROVED BY THE OWNER OR OWNER'S REPRESENTATIVE.
- THE CONTRACTOR SHALL VERIFY ALL DIMENSIONS IN THE FIELD.
- NO PLANTING SHALL OCCUR WHEN THE SOIL IS FROZEN.

PLANTING SEQUENCE

- DIG THE PLANTING HOLE A MINIMUM OF 2x WIDTH OF ROOTBALL FOR AT LEAST THE FIRST 12 INCHES OF DEPTH. BELOW 12 INCHES, DIG HOLE WIDE ENOUGH TO PERMIT ADJUSTING. DO NOT DIG THE HOLE DEEPER THAN ROOT BALL DEPTH.
- HOLES FOR INDIVIDUAL PLANTINGS SHALL BE EXCAVATED TO PRODUCE VERTICAL SIDES AND FLAT BOTTOMS. ALL PLANTING HOLES SHALL HAVE ROUGHED, SCARIFIED SIDES AND BOTTOMS.
- LIFT AND SET THE TREE BY ROOT BALL ONLY. DO NOT LIFT USING THE TREE TRUNK AND DO NOT USE TREE TRUNK AS A LEVER.
- SET THE TOP OF THE ROOT BALL LEVEL WITH THE SOIL SURFACE OR SLIGHTLY HIGHER.
- BACKFILL WITH EXISTING SOIL THAT HAS BEEN WELL-TILLED OR BROKEN UP.
- PRUNING SHALL BE LIMITED TO DEAD, DISEASED, OR BROKEN LIMBS ONLY AND SHALL BE IN ACCORDANCE WITH ANSI A300 SPECIFICATIONS.
- REMOVE ANY TRUNK WRAP REMAINING AT TIME OF PLANTING. NO WRAPS SHALL BE PLACED ON TRUNK.
- THE CONTRACTOR SHALL RESTORE AREAS DISTURBED BY THE INSTALLATION OF SHRUBS AND TREES.

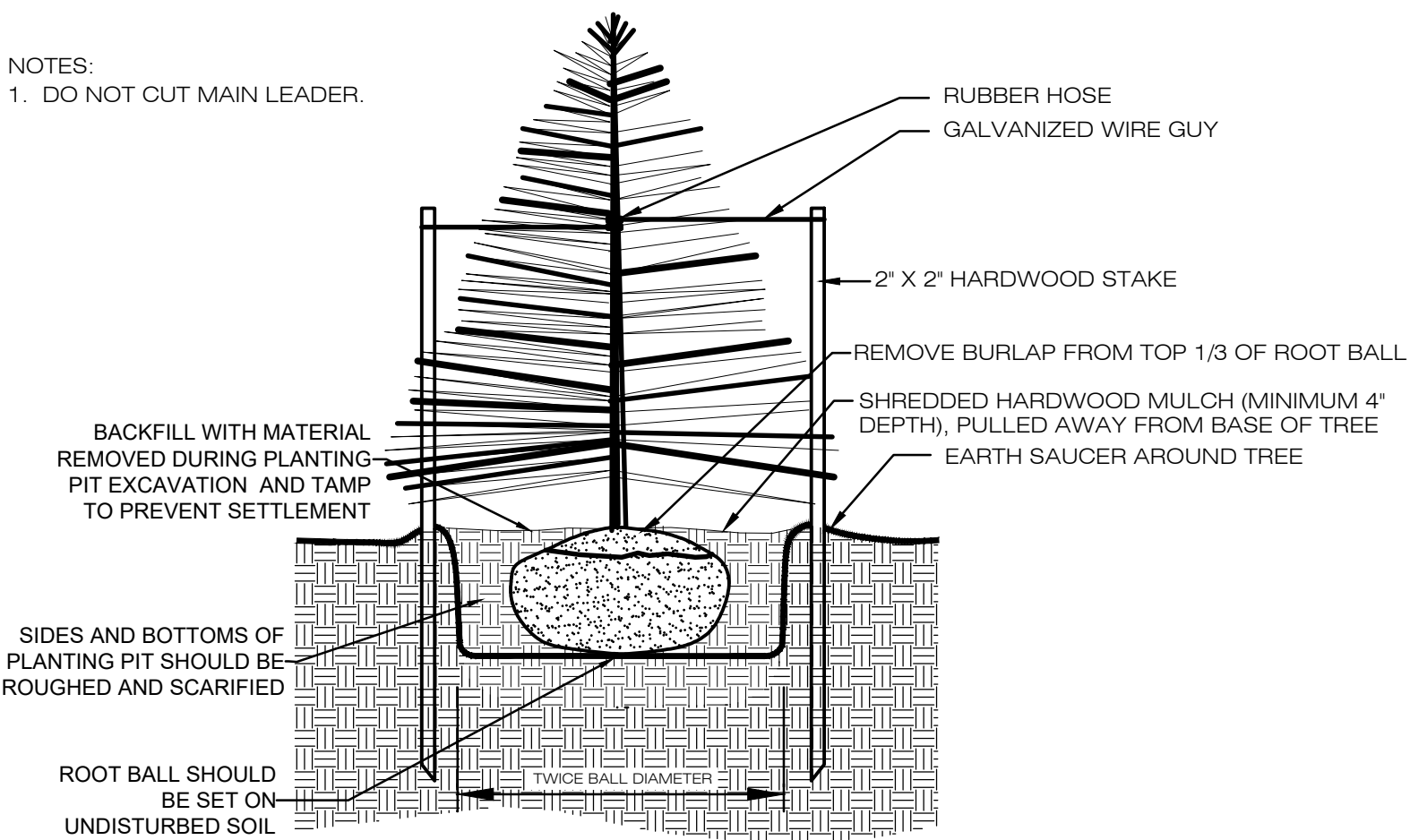
PROJECT ACCEPTANCE, MAINTENANCE, AND WARRANTY

- PLANTED AREAS WILL BE INSPECTED AT COMPLETION OF INSTALLATION AND ACCEPTED (INITIAL ACCEPTANCE) WITH SPECIFIED MATERIALS AND INSTALLATION REQUIREMENTS. FOLLOWING INITIAL ACCEPTANCE OF THE COMPLETE INSTALLATION OF ALL PLANT MATERIAL, THE WARRANTY PERIOD WILL BEGIN.
- CONTRACTOR SHALL MAINTAIN INSTALLED SHRUBS AND TREES WITHIN THE PROJECT LIMITS UNTIL FINAL ACCEPTANCE OF THE PROJECT BY THE ENGINEER. FINAL ACCEPTANCE SHALL BE AT THE END OF THE WARRANTY PERIOD. MAINTENANCE SHALL INCLUDE PRUNING, CULTIVATING, WEEDING, WATERING, AND METHODS NECESSARY TO MAINTAIN PLANTS FREE OF INSECT, DISEASE, OR OTHER HERBIVORY DAMAGE UNTIL ACCEPTANCE. MAINTENANCE PERIOD SHALL BE ASSUMED TO CONTINUE THROUGH THE DURATION OF THE WARRANTY PERIOD.
- WARRANT PLANT MATERIAL TO REMAIN ALIVE AND BE IN HEALTHY, VIGOROUS CONDITION FOR A PERIOD OF ONE (1) YEAR AFTER INITIAL ACCEPTANCE. IF PLANTING TAKES PLACE OVER MULTIPLE PLANTING WINDOWS, THIS WARRANTY WILL REMAIN IN AFFECT ON ALL PLANT MATERIAL BASED ON THE WARRANTY PERIOD OF THE MOST RECENTLY INSTALLED PLANT MATERIAL.
- REMOVE AND IMMEDIATELY REPLACE ALL PLANTS, AS DETERMINED BY THE OWNER'S REPRESENTATIVE, TO BE UNSATISFACTORY DURING THE INITIAL PLANTING INSTALLATION.
- REPLACE AT ONCE, IN ACCORDANCE WITH THE DRAWINGS AND SPECIFICATIONS, ALL PLANTS THAT ARE DEAD OR, AS DETERMINED BY THE OWNER'S REPRESENTATIVE, OR ARE IN SEVERELY UNHEALTHY CONDITION WITHIN THE WARRANTY PERIOD. REPLACEMENTS TO BE INSTALLED AT THE CONTRACTOR'S EXPENSE AT NEXT BEST PLANTING SEASON.
- TREE STAKING SHOULD BE REMOVED AFTER ONE COMPLETE GROWING SEASON. IF STAKING IS REQUIRED ON REPLACED WARRANTED MATERIAL AT THE TIME OF WARRANTY PLANTING, THESE STAKES SHALL BE REMOVED AFTER ONE COMPLETE GROWING SEASON FOLLOWING INSTALLATION.
- CONTRACTOR IS RESPONSIBLE FOR PROVIDING HERBIVORY PROTECTION DURING THE MAINTENANCE AND WARRANTY PERIOD. REPLACEMENT OF PLANTS DUE TO DAMAGE FROM HERBIVORY WILL BE AT THE CONTRACTOR'S EXPENSE.
- UPON FINAL ACCEPTANCE, THE OWNER WILL ASSUME PLANT MAINTENANCE.

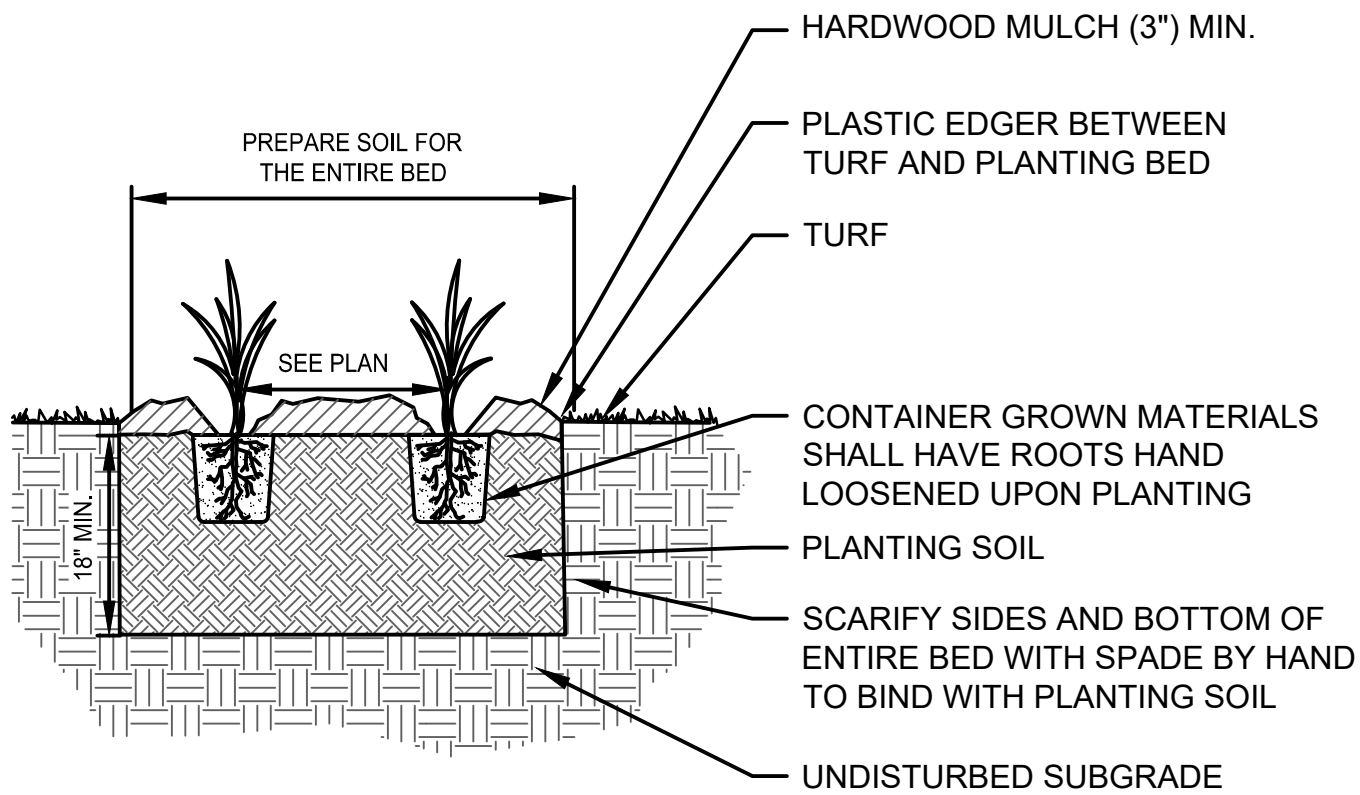
PROJECT MEASUREMENT AND PAYMENT

- THE QUANTITY OF PLANTING TO BE PAID FOR WILL BE THE ACTUAL INDIVIDUAL PLANTS INSTALLED AND MAINTAINED.
- ALL WORK COVERED BY THIS ITEM WILL BE PAID FOR AT THE CONTRACT RATE PER PLANT. SUCH PRICE WILL BE PARTIAL PAYMENT (90%) FOR THE WORK INCLUDING MATERIALS, LABOR, WARRANTY, AND ANY OTHER ITEMS. INCIDENTAL TO THE WORK AFTER INITIAL ACCEPTANCE. FINAL PAYMENT (REMAINING 10%) WILL BE PAID FOLLOWING FINAL ACCEPTANCE AFTER COMPLETION OF THE WARRANTY PERIOD.

NOTES:  
1. DO NOT CUT MAIN LEADER.



1  
4  
DETAIL: EVERGREEN TREE PLANTING  
N.T.S.



2  
4  
DETAIL: DECIDUOUS SHRUB PLANTING  
N.T.S.

PRELIMINARY  
NOT FOR  
CONSTRUCTION  
02/10/2025

C	ISSUED FOR REVIEW					RB	SL	AC	02/10/2025
B	ISSUED FOR REVIEW					RB	SL	AC	12/20/2024
A	ISSUED FOR REVIEW					RB	SL	AC	11/26/2024
REV.	DESCRIPTION					DRAWN	CHKD	APPRVD	DATE
DRAWING REVISIONS									



**Stantec**  
Stantec Consulting Services Inc.  
50 Derby Street Suite 260  
Hingham, MA U.S.A. 02043  
www.stantec.com

COA #

SEAL

5022

3052

Beaumont Centre Circle

Lexington, Kentucky

U.S.A. 40513-1703

FILE NAME: 2057322000 Lost City Solar.dwg

Copyright Reserved The Contractor shall verify and be responsible for all dimensions. DO NOT scale the drawing - any errors or omissions shall be reported to Stantec without delay. The Copyrights to all designs and drawings are the property of Stantec. Reproduction or use for any purpose other than that authorized by Stantec is forbidden.			CLIENT/PROJECT: LOST CITY RENEWABLES LLC LOST CITY MUHLENBURG COUNTY, DUNMOR KENTUCKY		
DRAWN: RB			TITLE: LOST CITY LANDSCAPE DETAILS		
DESIGNED: RB			SHT 4 OF 4		
PROJECT NO: 2057322000			DWG NO: 2057322000-LC-C-700		
SCALE: N/A			REV: C		